

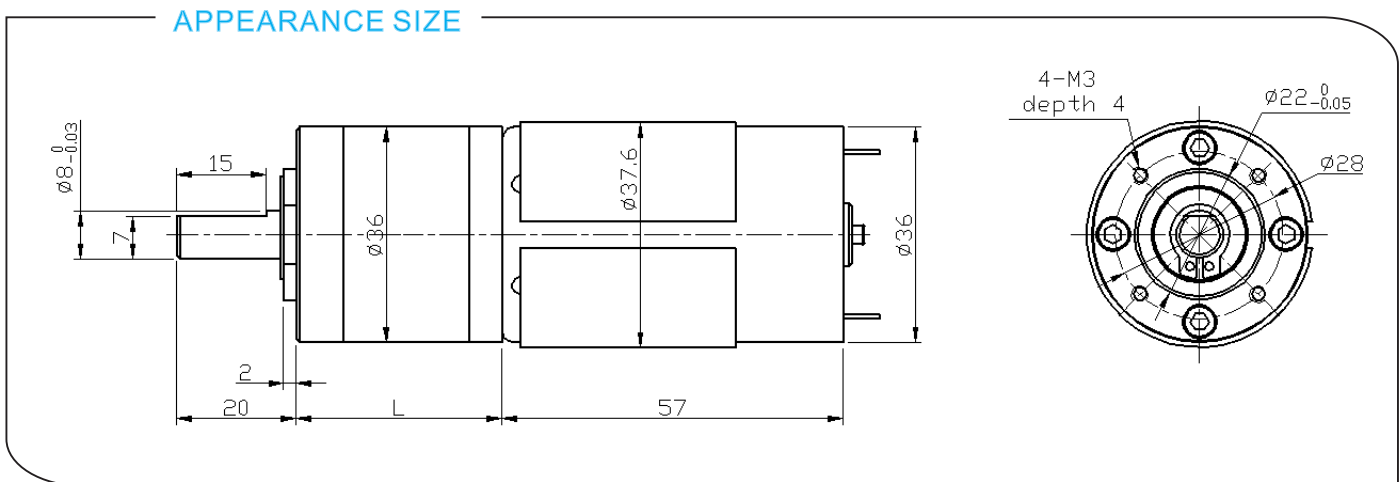
# DM-36RP555 DC PLANETARY GEAR MOTOR

基本电压/Main Voltage : 12VDC、24VDC

典型应用/Typical Applications :

光学仪器、监控摄像机、节能、节水设备、IC水卡、玩具和礼品、办公设备、家用电器、自动化设备。

Optical instrument, Surveillance cameras, Automated energy efficiency, Water saving equipment, IC water card, Toys and gifts, Office equipment, Household appliance, automation equipment



## 减速箱参数/Gearbox Data:

级数 Number of stages	1	2	3	4	5
减速比 Reduction ratio	3.7、5.2	14、19、27	51、71 100、139	189、264、369 515、721	977、1367、1910 2671、3736
减速箱长度 Gearbox length "L" mm	26.5	34.5	42.5	50.5	58.5
破坏扭矩 Breaking torque(kgf.cm)	10	18	40	50	60
减速箱效率 Gearbox efficiency	90%	81%	73%	65%	59%

## 电机参数/Driving Motor Data:

电机型号 Motor model	额定电压 Rated Volt.	空载/No load		负载/Load				堵转/Stall	
		电流 Current	转速 Speed	电流 Current	转速 Speed	扭矩 Torque	输出功率 Output power	扭矩 Torque	电流 Current
		V	mA	r/min	mA	r/min	g.cm	W	g.cm
DM-555-012-3000	12	≤140	3000	≤800	2200	150	3.4	≥480	≥2400
DM-555-012-4500	12	≤220	4500	≤1200	3300	220	7.4	≥700	≥3840
DM-555-012-6000	12	≤350	6000	≤2000	4500	300	13.8	≥960	≥4800
DM-555-024-3000	24	≤70	3000	≤400	2200	150	3.4	≥480	≥1280
DM-555-024-4500	24	≤110	4500	≤600	3300	220	7.4	≥700	≥2400
DM-555-024-6000	24	≤180	6000	≤1000	4500	300	13.8	≥960	≥3200

## 备注/Remark:

齿轮减速箱额定扭矩 = 电机额定扭矩 \* 减速比 \* 减速箱效率

Gear Motor Torque = Driving motor torque \* Reduction ratio \* Gearbox efficiency;

齿轮减速箱额定转速 = 电机额定转速 / 减速比

Gear Motor Speed = Driving motor speed / Reduction ratio

电机具体配置可根据客户的要求进行定制，像电压，速度，以及轴的长度和形状...

Motor detailed config can be customized according to customer's requests, like voltage, speed, as well as shaft length and shape...

欢迎OEM或ODM项目

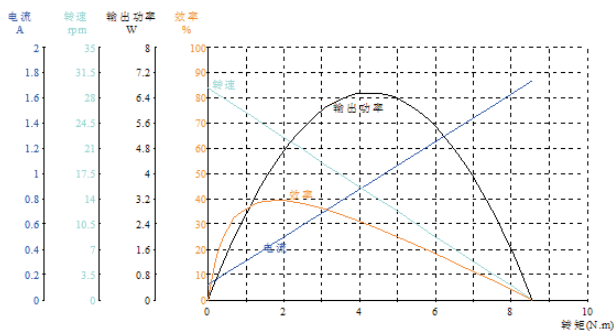
Welcome OEM or ODM projects

减速电机样品数据/Geared Motor Samples Data :

电机型号 Motor model	额定电压	空载/No load		负载/Load				堵转/Stall	
	Rated Volt.	电流 Current	转速 Speed	电流 Current	转速 Speed	扭矩 Torque	输出功率 Output power	扭矩 Torque	电流 Current
	V	A	r/min	A	r/min	kgf.cm	W	kgf.cm	A
DM-36RP5550067000-515K	6.0	0.84	12.3	2.58	9.2	56.68	5.35	225.84	7.80
DM-36RP5550124500-51K	12.0	0.31	96.1	1.61	80.2	11.64	9.58	70.26	8.15
DM-36RP5550124500-264K	12.0	0.26	17.1	1.21	13.8	34.48	4.89	180.70	5.22
DM-36RP5550124500-515K	12.0	0.22	10.1	0.87	7.7	45.85	3.62	193.22	2.99
DM-37RP5550126000-5.2K	12.0	0.42	1191.3	2.00	993.0	1.26	12.83	7.56	9.91
DM-36RP5550126000-27K	12.0	0.55	224.2	2.38	187.7	7.65	14.74	46.95	11.78
DM-36RP5550126000-51K	12.0	0.29	113.5	1.52	94.1	9.03	8.72	52.76	7.52
DM-36RP5550126000-71K	12.0	0.39	82.9	1.88	66.5	13.82	9.43	69.82	7.91
DM-36RP5550126000-100K	12.0	0.38	59.3	1.64	48.8	16.51	8.27	93.10	7.48
DM-36RP5550126000-139K	12.0	0.28	42.2	1.40	36.1	20.88	7.73	143.40	8.01
DM-36RP5550126000-188K	12.0	0.43	31.3	1.88	25.7	33.70	8.89	189.19	8.55
DM-36RP5550126000-262K	12.0	0.57	22.3	2.10	17.8	51.73	9.46	255.34	8.20
DM-36RP5550129000-51K	12.0	0.64	179.2	3.48	150.3	13.63	21.03	84.45	18.27
DM-36RP5550243100-100K	24.0	0.12	29.4	0.44	23.5	17.00	4.21	87.00	1.73
DM-36RP5550243000-139K	24.0	0.08	21.3	0.36	17.1	21.01	3.69	106.86	1.50
DM-36RP5550246000-14K	24.0	0.20	417.0	1.03	342.7	3.47	12.19	19.46	4.86
DM-36RP5550246000-189K	24.0	0.24	31.5	1.16	26.0	41.81	11.16	240.34	5.57
DM-36RP5500249200-3.7K	24.0	0.62	2410.1	2.79	1882.9	1.46	28.28	6.69	10.55

曲线图/Curve Chart :

Model: DM-36RP5550243100-100K



Model: DM-36RP5550124500-515K

