

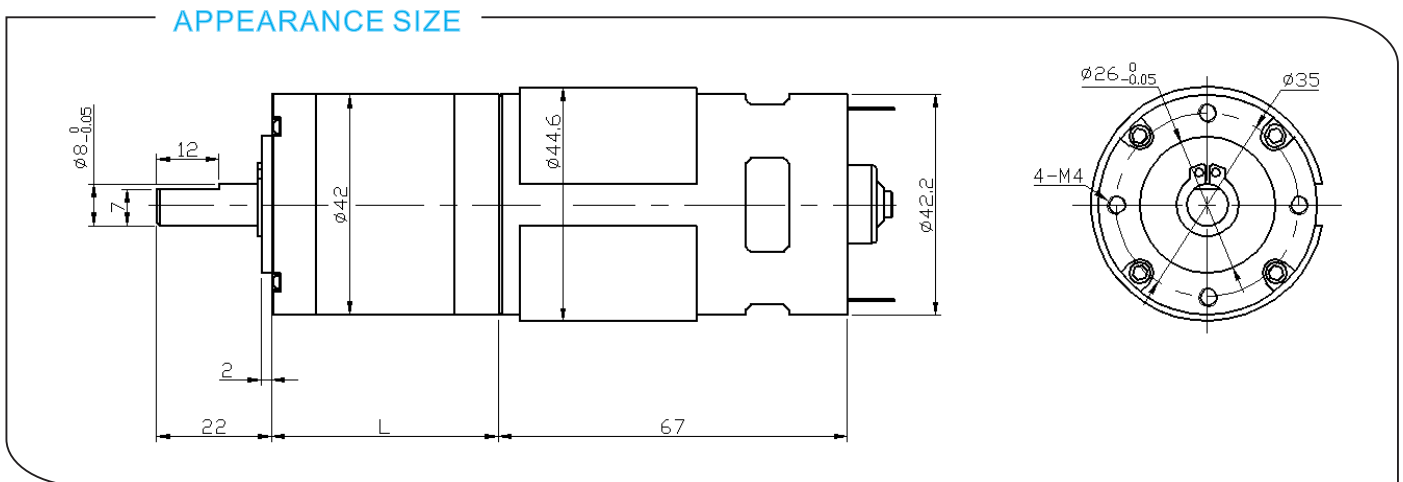
# DM-42RP775 DC PLANETARY GEAR MOTOR

基本电压/Main Voltage : 12VDC、24VDC

典型应用/Typical Applications :

光学仪器、监控摄像机、节能设备、节水设备、IC水卡、玩具和礼品、办公设备、家用电器、自动化设备。

Optical instrument, Surveillance cameras, Automated energy efficiency, Water saving equipment, IC water card, Toys and gifts, Office equipment, Household appliance, automation equipment



## 减速箱参数/Gearbox Data:

级数 Number of stages	1	2	3	4
减速比 Reduction ratio	3.7、5	13、18、25	49、67、92、125	181、246、336、458、625
减速箱长度 Gearbox length "L" mm	33.5	43.5	53.5	63.5
破坏扭矩 Breaking torque(kgf.cm)	15	25	50	90
减速箱效率 Gearbox efficiency	90%	81%	73%	65%

## 电机参数/Driving Motor Data:

电机型号 Motor model	额定电压 Rated Volt.	空载/No load		负载/Load				堵转/Stall	
		电流 Current	转速 Speed	电流 Current	转速 Speed	扭矩 Torque	输出功率 Output power	扭矩 Torque	电流 Current
		V	mA	r/min	mA	r/min	g.cm	W	g.cm
DM-775-012-3000	12	≤280	3000	≤1300	2600	450	12	≥3600	≥8600
DM-775-012-4500	12	≤450	4500	≤2100	3800	500	19.5	≥4600	≥16200
DM-775-012-6000	12	≤680	6000	≤3600	5200	600	32	≥5600	≥27200
DM-775-024-3000	24	≤120	3000	≤920	2600	450	12	≥2800	≥5100
DM-775-024-4500	24	≤230	4500	≤1400	3800	500	19.5	≥4100	≥11000
DM-775-024-6000	24	≤350	6000	≤2300	5100	600	31.4	≥5800	≥19000

## 备注/Remark:

齿轮减速箱额定扭矩 = 电机额定扭矩 \* 减速比 \* 减速箱效率

Gear Motor Torque = Driving motor torque \* Reduction ratio \* Gearbox efficiency;

齿轮减速箱额定转速 = 电机额定转速 / 减速比

Gear Motor Speed = Driving motor speed / Reduction ratio

电机具体配置可根据客户的要求进行定制, 像电压, 速度, 以及轴的长度和形状...

Motor detailed config can be customized according to customer's requests, like voltage, speed, as well as shaft length and shape...

欢迎OEM或ODM项目

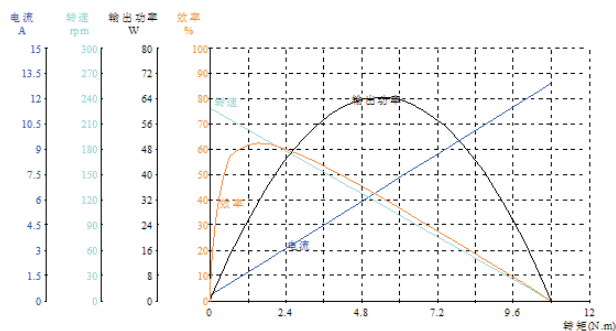
Welcome OEM or ODM projects

减速电机样品数据/Geared Motor Samples Data :

电机型号 Motor model	额定电压 Rated Volt.	空载/No load		负载/Load				堵转/Stall	
		电流 Current	转速 Speed	电流 Current	转速 Speed	扭矩 Torque	输出功率 Output power	扭矩 Torque	电流 Current
	V	A	r/min	A	r/min	kgf.cm	W	kgf.cm	A
DM-42RP7750123500-3.7K	12.0	0.40	941.9	2.04	772.1	1.77	14.00	9.80	9.48
DM-42RP7750123600-125K	12.0	0.36	28.1	1.71	23.4	43.98	10.57	261.56	8.44
DM-42RP7750126000-5K	12.0	0.80	1296.5	3.99	1087.1	2.60	29.05	16.11	20.51
DM-42RP7750126000-49K	12.0	0.80	115.6	3.86	97.6	22.40	22.43	143.52	20.37
DM-42RP7750126000-125K	12.0	0.83	46.2	3.55	37.0	52.37	19.90	263.04	14.54
DM-42RP7750127000-3.7K	12.0	1.23	1929.4	5.90	1544.7	2.54	40.28	12.74	24.65
DM-42RP7750127000-125K	12.0	1.01	53.9	5.25	43.9	64.04	28.82	344.17	23.80
DM-42RP7750128000-25K	12.0	1.06	318.0	4.22	249.7	9.90	25.36	46.07	15.77
DM-42RP7750128000-92K	12.0	1.08	87.7	5.09	72.1	39.96	29.56	224.38	23.57
DM-42RP77501212000-3.7K	12.0	3.10	3234.8	13.50	2528.9	3.22	83.67	14.77	50.74
DM-42RP7750242000-336K	24.0	0.08	6.0	0.32	4.7	57.22	2.76	261.33	1.18
DM-42RP7750242100-49K	24.0	0.11	41.7	0.46	32.3	13.55	4.49	60.21	1.67
DM-42RP7750242100-67K	24.0	0.08	29.4	0.39	23.7	17.16	4.18	88.90	1.68
DM-42RP7750243000-18K	24.0	0.16	165.2	0.85	136.3	7.72	10.80	44.19	4.11
DM-42RP7750243000-49K	24.0	0.13	62.2	0.72	53.2	15.81	8.64	109.44	4.22
DM-42RP7750243600-125K	24.0	0.19	29.1	1.16	24.5	57.20	14.40	363.22	6.34
DM-42RP7750245000-27K	24.0	0.21	197.2	1.57	166.7	13.32	22.79	86.06	9.02
DM-42RP7750244500-181K	24.0	0.60	24.6	2.02	19.4	92.40	18.38	433.23	7.31
DM-42RP7750246000-25K	24.0	0.30	228.9	1.93	199.3	14.00	29.17	110.00	12.92
DM-42RP7750247000-13K	24.0	0.46	551.6	3.29	467.2	10.20	48.92	66.66	18.99
DM-42RP7750247000-67K	24.0	0.37	104.1	2.40	90.6	32.98	30.68	254.37	16.00
DM-42RP7750248000-25K	24.0	0.63	330.4	4.07	277.1	19.62	55.82	121.62	21.93
DM-42RP7750248000-92K	24.0	0.51	85.7	3.11	72.3	52.97	39.29	338.17	17.13
DM-42RP77502410000-13.7K	24.0	0.57	729.9	4.57	626.6	10.76	69.21	76.00	28.77

曲线图/Curve Chart :

Model: DM-42RP7750246000-25K



Model: DM-42RP7750248000-92K

